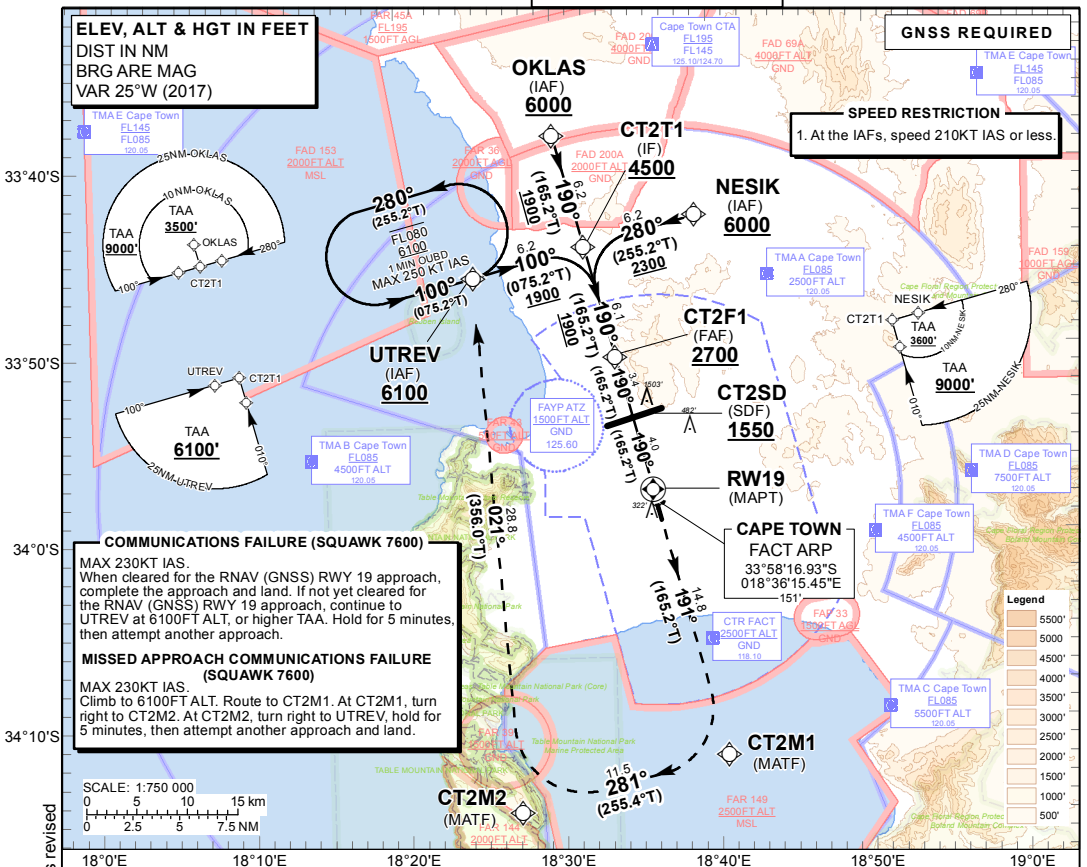


INSTRUMENT APPROACH CHART - ICAO

**AERODROME ELEV 151'
HEIGHTS RELATED TO THR RWY 19 - ELEV 147'**

RADAR APP: 119.70
TWR: 118.10
ATIS: 127.00

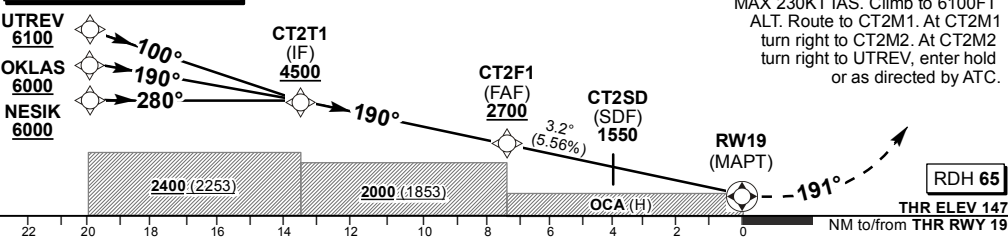
**CAPE TOWN INTL
RNAV (GNSS) RWY 19
CAT A - D**



CHANGE: RDH, OCA (H) LNAV/VNAV text: RoD and Advisory ALT Tables revised

DIST (NM) to THR 19	7.37	7	6	5	4	3	2
ADVISORY ALT(HGT)	2700 (2553)	2580 (2433)	2240 (2093)	1900 (1753)	1570 (1423)	1230 (1083)	890 (743)

**TRANSITION ALT 7500
TRANSITION LEVEL ATC**



Straight-in Approach	OCAs (H)	A	B	C	D	GS	KT	80	100	120	140	160	180	
	LNAV (With SDF)	4.8%	650 (503)	650 (503)	650 (503)	650 (503)	CT2F1 to RWY19	M:S	5:32	4:25	3:41	3:10	2:46	2:27
	LNAV (Without SDF)	4.8%	690 (543)	690 (543)	690 (543)	690 (543)		Rate of descent	FPM	453	563	675	788	900
	LNAV	2.5%	3250 (3103)	3250 (3103)	3250 (3103)	3250 (3103)	NOTE:							
	LNAV/VNAV	4.6%	610 (463)	610 (463)	610 (463)	610 (463)	1. RoD is 3.2%. 2. Turns prior MAPT prohibited. 3. BaroVNAV operations not authorised below 0°C and MAX VPA 3.5°C, Temperature +70°C. 4. No circling.							
RVR		1000m	1200m	1200m	1600m	Circling								
ALS OUT		1500m	1500m	2000m	2000m	NIL Circling								

EFF: 24 MAY 18